

Violin I

Eine kleine Nachtmusik: 2nd mvmt.

⊕ = OPTIONAL CUT

W.A. MOZART

ROMANCE. Andante

p *f*

6 *p*

10 *cresc.* *p*

14 *f* *p*

19

23

27

33 *f*

38 ⊕ *(p)* *sfz*

44

50 *p*

Violin I

54 *f*

58 *p* *cresc.*

62 *p* *f*

66 Coda *f* *p*

70

Violin II

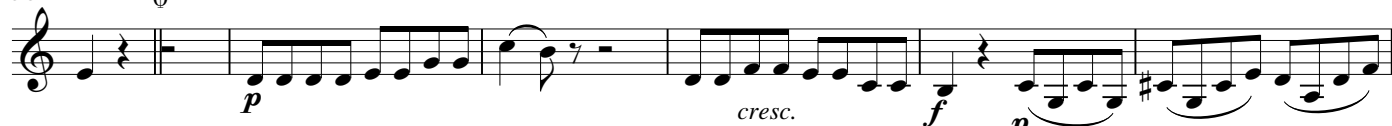
49



53



58



64



69



Violin III

Eine kleine Nachtmusik: 2nd mvmt.

W.A. MOZART

ROMANCE. Andante

⊕ = OPTIONAL CUT

4

f

p

10

cresc.

f

f

p

17

23

29

4

f

tr

38

⊕

(p)

41

sfz

44

47

50

4

f

tr

58

⊕

p

cresc.

f

66

Coda

f

p

Eine kleine Nachtmusik: 2nd mvmt.

⊕ = OPTIONAL CUT

W.A. MOZART

ROMANCE. Andante

8

16

22

28

35

41

47

52

58

66

Coda